

PRELIMINARY INSTRUCTIONS BB-200 MICROWAVE MOTION SENSOR

The Model BB-200 replaces the Model BB-150 effective November 2011

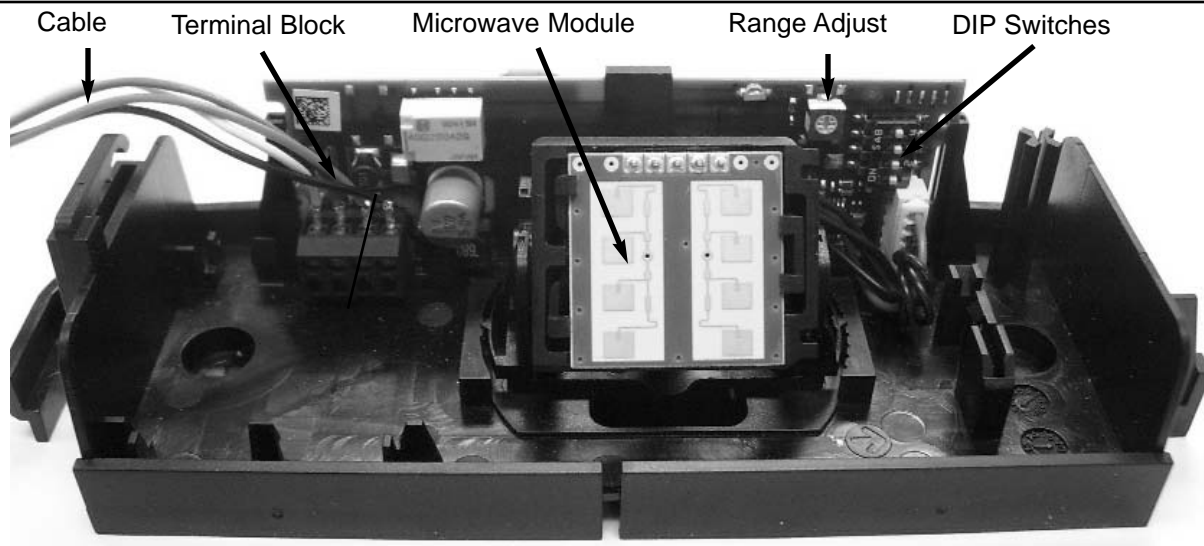


Figure 1. Location of principal components

CABLE CONNECTIONS

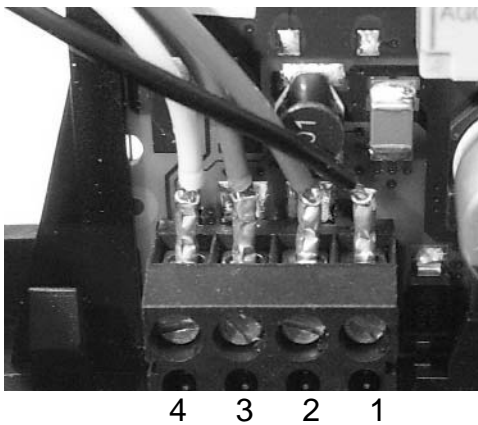


Figure 2 External Connections

- 1--BLACK
POWER 11.5 TO 32 VDC
10 TO 28 VAC
- 2--RED
- 3--GREEN
RELAY CONTACT
- 4--WHITE

DIP SWITCH SETTINGS

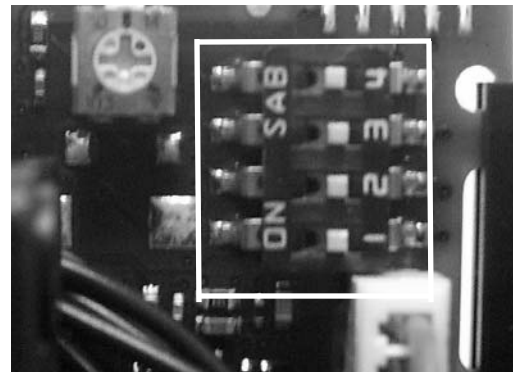
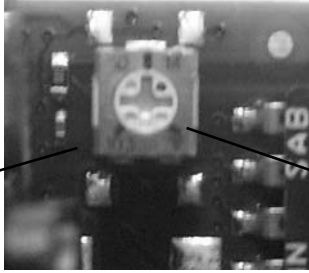


Figure 3 DIP Switch Location

DIP SWITCH SETTINGS

1. Direction Recognition
ON = Both Directions
OFF=Towards Sensor Only
2. Cross Traffic
ON = Masks Cross Traffic
OFF = Normal Operation
3. Slow Motion Detect
ON = Detects very slow movement
OFF = Normal Operation
4. Output Logic
ON = Relay Normally Closed
OFF = Relay Normally Open

DEFAULT SETTINGS IN BOLD



Least Sensitive

Most Sensitive

SENSITIVITY ADJUSTMENT

Using a small screwdriver carefully change the potentiometer to achieve the desired range.

Rotate **CLOCKWISE** to increase range

When mounted 7 feet above the floor, with the Microwave Module aimed down 30 degrees the detection field will be approximately 20 inches wide and 10 inches deep a minimum sensitivity. As maximum sensitivity, the detection field will be approximately 13 feet wide extending outward about 6 feet 6 inches. These are typical ranges, but the actual setting should be determined during installation.

Operating Range:

Sensor mounted 7 feet above floor, Microwave Module aimed down 30 degrees

Minimum Field Size: 20 by 10 inches

Maximum Field Size: 13 by 6 feet

Microwave Module Adjustment:

Vertical: -5 degrees to 90 degrees in 5 degree increments

Rotational: -20 degrees to +20 degrees

Power Requirements:

AC 12 to 28 Volts

DC 11.5 to 32 Volts

Power Consumption: 120 mA maximum

Output Relay Rating: Maximum Voltage 48, Maximum Current 1 Ampere

Indicator: Green LED illuminates when motion detected

Operating Temperature: -4 to 140 degrees F (-20 to 60 degrees C)

Size: L x W x D 6.8" x 2.4" x 1.9" (172 x 60 x 48 mm)

Weight 4.2 Ounces (120 Grams)

Museum Technology Source Inc.

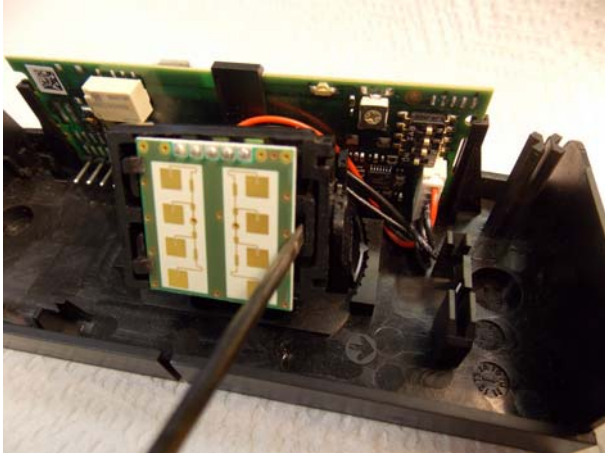
323 Andover Street | Wilmington MA 01887
800-729-6873 | 978-657-3898 | f 978-657-7132

www.museumtech.com

Initial Release November 2011 REV A

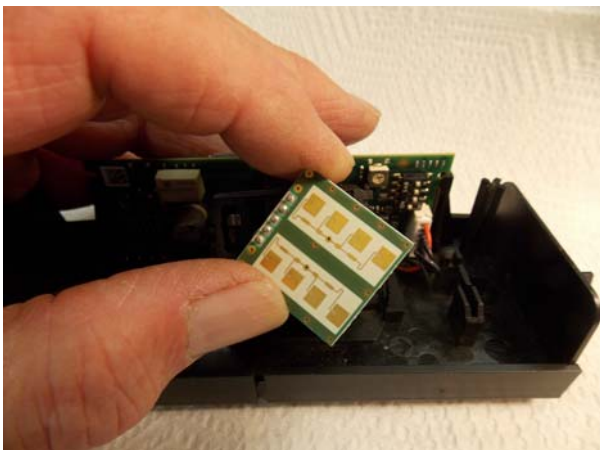
BB-200 Motion Sensor: Changing the beam pattern

As supplied, the antenna is oriented to produce a pattern about twice as wide as it is deep. To provide a beam that is narrower, rotate the antenna as shown below. From a 7 foot height, the pattern can range from approximately 6" x 30" to approximately 6 feet x 13 feet, depending upon the setting of the sensitivity control.



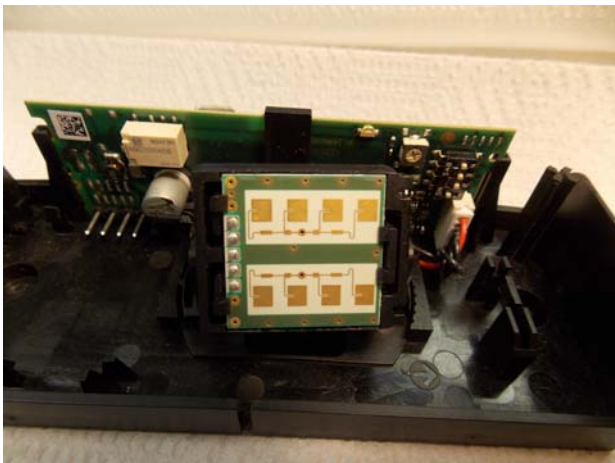
Step 1

Using a finger or small screwdriver, push the clip to the right to release the antenna



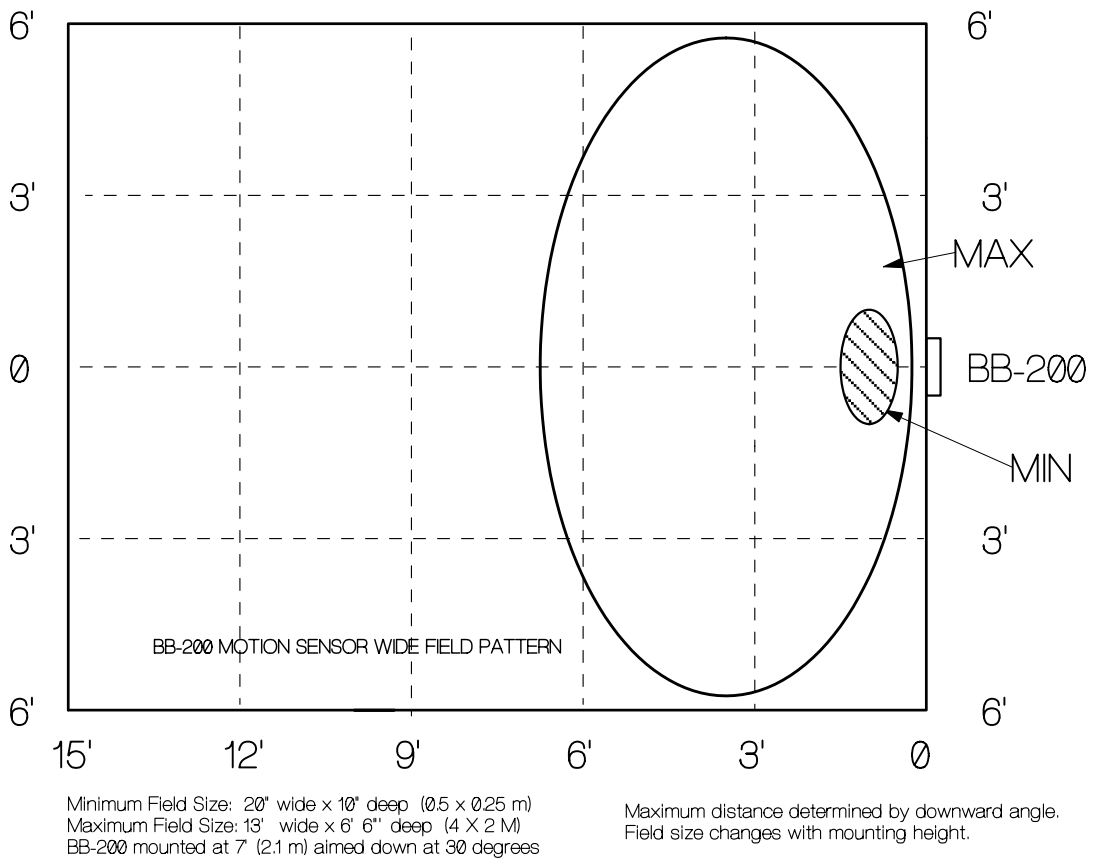
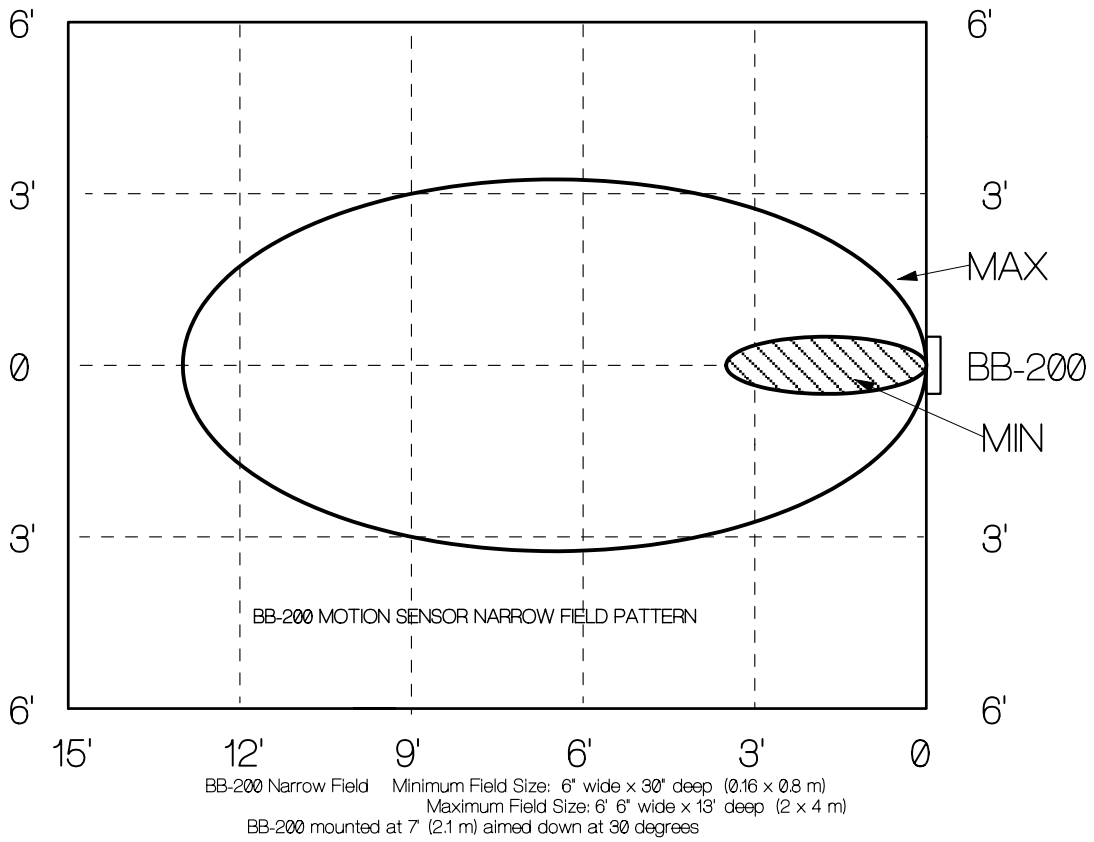
Step 2

Rotate the antenna 90 degrees to the left



Step 3

Slide the antenna into the left hand clips and press to click into place



DIMENSIONS ARE APPROXIMATE AND TO BE USED AS A GENERAL GUIDE ONLY

BB-200 BEAM PATTERNS